

Elvi

Wall Dock

installation manual

Elvi
Wall Dock
installation manual

contents

contents	1
safety precautions	2
components and features	3
1. unpack wall dock	5
2. install wall dock	7
3. remove wall dock cover	14
4. warranty	15
5. declaration of conformity	16

safety precautions

 **Warning:** Risk of electric shock.

- Read the supplied documentation carefully to familiarize yourself with all safety instructions and regulations before using this product.
- This product is designed and tested in accordance with international standards.
- The use of this product is limited to those applications it is designed for.
- Installation, maintenance and repairs of this product are only to be performed by qualified personnel.
- Incorrect installation or repairs may cause hazardous situations for the user of this product.
- This product is used in combination with a power source.
- Always switch off power before any maintenance activity.
- This product contains no user-serviceable parts. Consult EVBox or your distributor for more information. Do not attempt to service or repair the product yourself!
- Make sure that the product is only used under the correct operating conditions.
- Make sure that the main power is disconnected before storing or transporting this product.
- Make sure that the power line to the wall dock is installed on a dedicated circuit breaker (MCB) on your service panel. The installation must incorporate an adequate residual-current device (RCD). The MCB must be in line with the capacity of the Elvi charging cable used (3.7, 7.4, 11, 22 kW). In case the amperage rating of the charging cable is different than the amperage rating of the (MCB), the installer/user must change the station settings in the mobile station management application and/or backend portal account as provided by the operator or service provider for this product.

The installing party must always ensure that the wall dock is installed according to the local regulations. The installation settings of the service panel must always be adjusted by a qualified electrician.

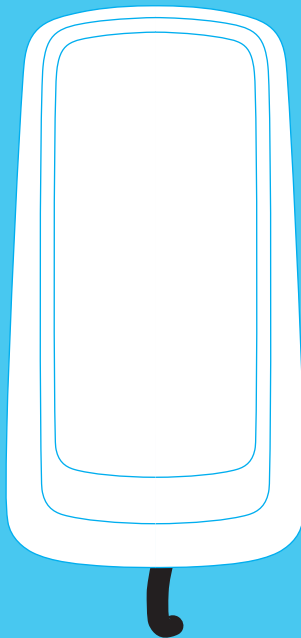
EVBox is not responsible for any damage that occurs if this product is transported in a different packaging than the packaging in which the product was originally supplied. Store this product in a dry environment; the storage temperature must be between -25 °C and +60 °C.

EVBox strives to manufacture products of the highest quality. EVBox products bear the CE certification and are compliant with the essential requirements of EMC Directive 2014/30/EU and Low Voltage Directive 2014/35/EU. More details can be found at [evbox.com](https://www.evbox.com) or in this installation manual. EVBox products are sold with a limited warranty described at [evbox.com/general-terms-conditions](https://www.evbox.com/general-terms-conditions).

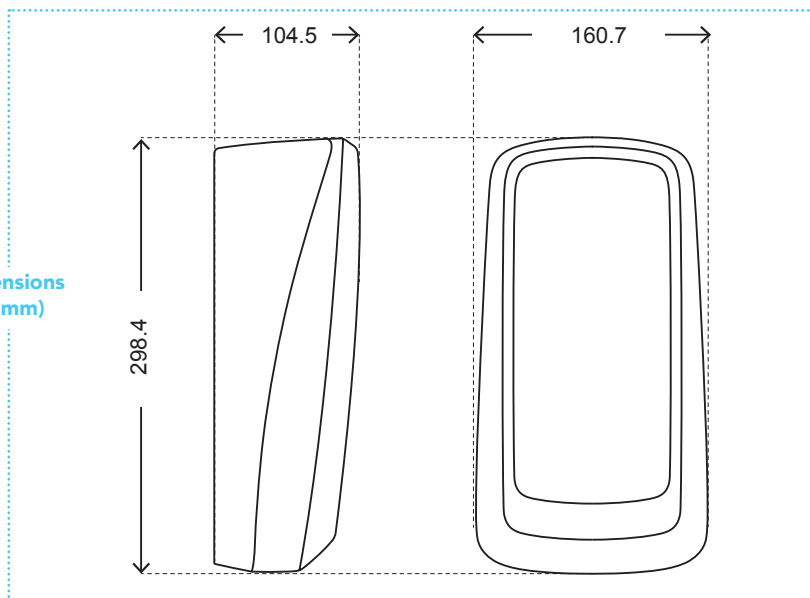
components & features

Elvi Wall Dock

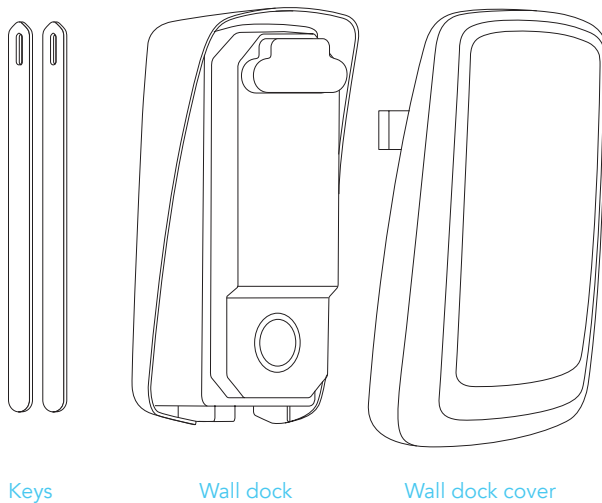
The Elvi wall dock provides a safe and modular grid connection and can be installed to create “EV ready” parking spaces. You can then (later) install the Elvi charging station by “clicking” it onto the wall dock without requiring an electrician. The cover ensures that the wall dock is protected until it is ready to be used.



**Dimensions
(in mm)**



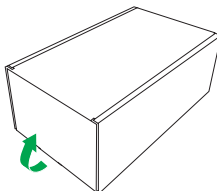
Components



1. unpack wall dock

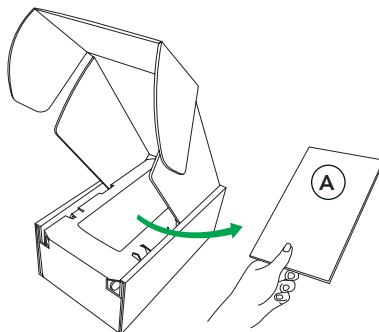
1.1

Place wall dock package on a flat and stable surface.



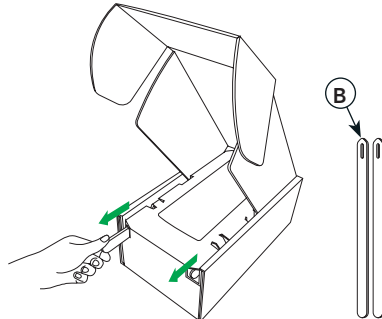
1.2

Open the box.
Put the installation manual (A) aside.



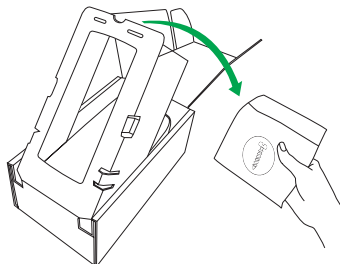
1.3

Take the keys (B) out of the box.
The keys (B) found in the box are only needed for removing the cover from the wall dock. Store them until needed.



1.4

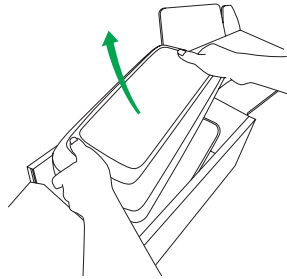
Take out the bag with the screws, plugs and drill bits and put it aside.



1. unpack wall dock

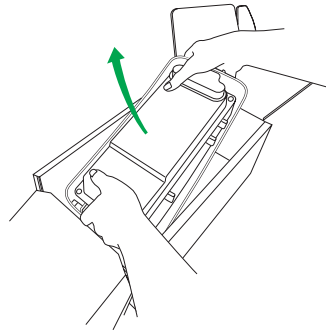
1.5

Take the wall dock cover out of the box.




1.6

Take the wall dock out of the box.



2. install wall dock

 **Warning:** Risk of electric shock.

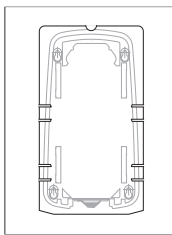
Before installing the wall dock, make sure that the power line you're using is switched off on your service panel.

Make sure that the power line to the wall dock is installed on a dedicated circuit breaker (MCB) on your service panel. The installation must incorporate an adequate residual-current device (RCD). The MCB must be in line with the capacity of the Elvi charging cable used (3.7, 7.4, 11, 22 kW). In case the amperage rating of the charging cable is different than the amperage rating of the (MCB), the installer/user must change the station settings in the mobile station management application and/or backend portal account as provided by the operator or service provider for this product.

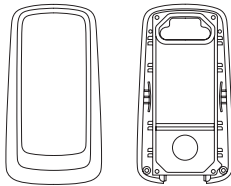
Be aware that local regulations may be applicable and may vary depending on your region/country of residence. The installing party must always ensure that the wall dock is installed according to the local regulations.

The installation settings of your service panel must always be adjusted by a qualified electrician.

Tools you need to install the wall dock

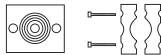


Included
in the box



4x screw SS
5 x 70 mm

4x plug
8 x 65 mm

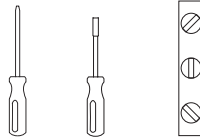


rubber seal strain relief

 1x bit T20

 1x bit T25

Not included
in the box

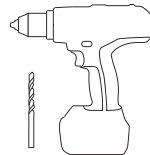


flat-head
screwdriver

bit-holding
screwdriver

bubble
level

drilling machine



8 mm drill



knife

2. install wall dock

Installation advice

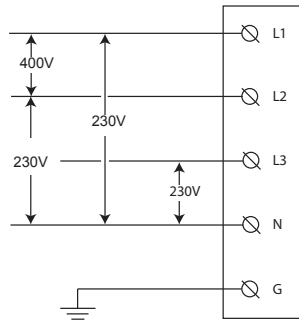
Earthing advice	TN-system	PE-cable
	TT-system IT-system	Earth electrode installed separately (self-installed)
Input	3-phase (400 V)	400/230 V (3F + N + PE) \pm 10% 50/60 Hz
	1-phase (230 V)	400/230 V (1F + N + PE) \pm 10% 50/60 Hz
	2-phase (230 V)	230/127 V (2F + PE) \pm 10% 50/60 Hz
MCB	C-characteristic (MCB must be selected to match the amperage settings of the charging station, considering MCB manufacturer specifications)	
RCD	40 A, 30 mA AC type A	

Note for the installer: In case of a TT or IT electric grid with 230 V from line to line, Elvi must be installed with 1-phase by connecting the clamps on L1 and N.

Service wiring

Option1: 400 V 3-phase with neutral (3F + N + PE)

For 3-phase use of a Wye-connected secondary, all three phases (L1, L2 and L3) and neutral must be connected. Each phase voltage must measure 230 V to neutral.

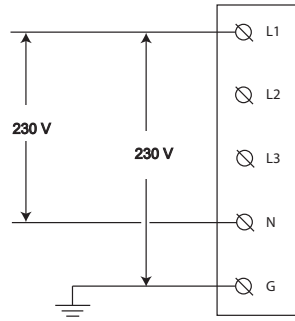


2. install wall dock

Option 2: 230 V 1-phase with neutral (1F + N + PE)

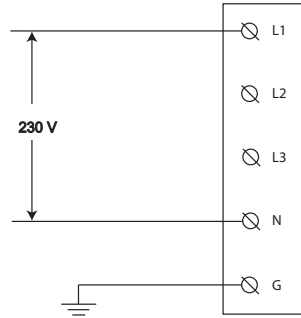
For 1-phase use of a Wye-connected secondary, only a single phase (L1) and neutral must be connected. This phase voltage must measure 230 V between line and neutral.

Warning: In this configuration, the charging station operates only from a single phase (L1). Do not connect the remaining phases L2 and L3.



Option 3: 230 V 1-phase without neutral (2F + PE)

In this configuration (without a neutral and 230 V from line to line), connect any two lines (L1, L2 or L3) to the L1 and neutral positions on the terminal block of the charging station.



Note: If you are not sure about the available connection type at the service panel, consult a qualified electrician.

2. install wall dock

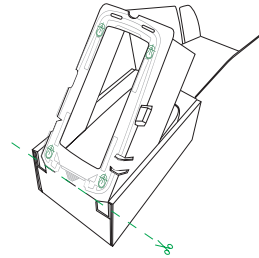
2.1

Select a solid and flat vertical surface for installing the wall dock.

Ensure that the surface is even and solid enough to resist a pull force of at least 100 kg.

2.2

Cut the drilling template from the packaging.

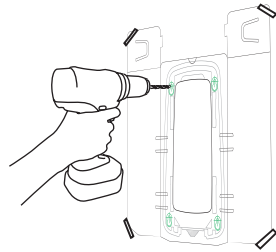


2.3

Place the drilling template onto the wall and use a level device (e.g. bubble level) to align the template. Mark the 4 mounting points on the wall and remove the template.

2.4

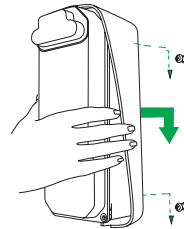
Drill holes with a drill round 8 mm. Use the provided 8x65 mm plugs.



2.5

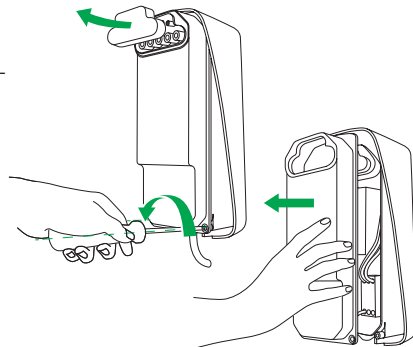
Screw in the provided 5x70 mm screws using the supplied torx T25 bit until the remaining distance from the wall is 10 mm. This is necessary in order to be able to hook on the wall dock.

Mount the wall dock onto the wall. Fasten the 4 screws.



2.6

Remove the protective rubber cap. Undo the 4 corner screws (3x Torx T20 using the supplied T20 bit and 1x slotted using a regular flat-head screwdriver). Remove the transparent cover from the wall dock.

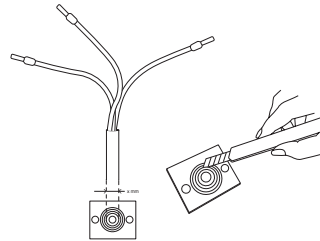


2. install wall dock

2.7

Measure the power cable's diameter and cut out the correct diameter of the rubber seal in order to allow the power cable and optional data cables to get through.

Note: Strain relief and rubber seal are supplied in a separate bag in the box.



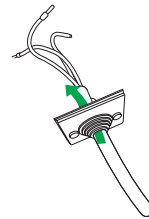
2.8

Feed the power line and optional data wiring through the rubber seal.

The total length of the power line fed through the rubber seal must be 180 mm.

Strip the power line over a length of 130 mm.

In case of stranded (flexible) wiring, use wire end sleeves with a ferrule length of 12-15 mm and apply a square crimp for optimal fit into the connection terminals.

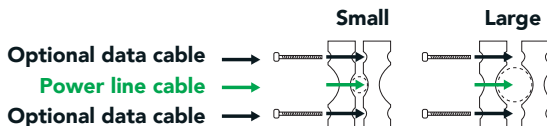


2.9

Assemble the strain relief.

Depending on the feed wire's thickness, use either the small or large diameter on the strain relief. Simply flip the symmetrical parts to obtain a different strain relief diameter.

The strain relief also accommodates for extra data cables on two sides (e.g. UTP/CAT5E/CAT6).



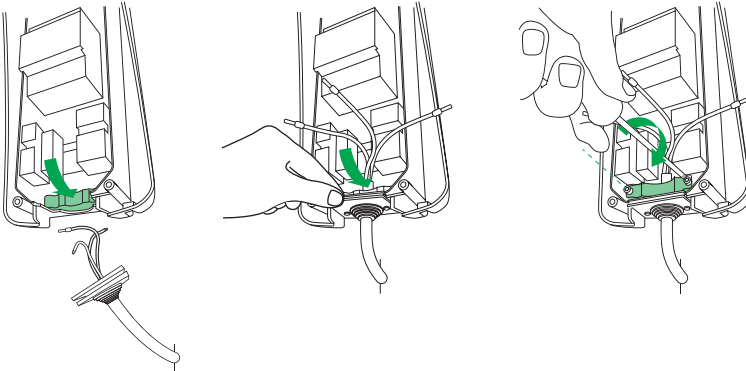
2. install wall dock

2.10

Place one part of the strain relief in the bottom of the wall dock.
Place the feed wire over the bottom part of the strain relief and mount the rubber seal in the outer edge of the wall dock.

Note: Be aware that the rubber seal has three groove edges and one tongue edge. Make sure that you place the tongue edge facing upwards.

Place the top part of the strain relief over the feed wire and use the two 4 x 40 mm screws and the Torx T20 head to mount the strain relief on the feed wire. Do not overtighten.

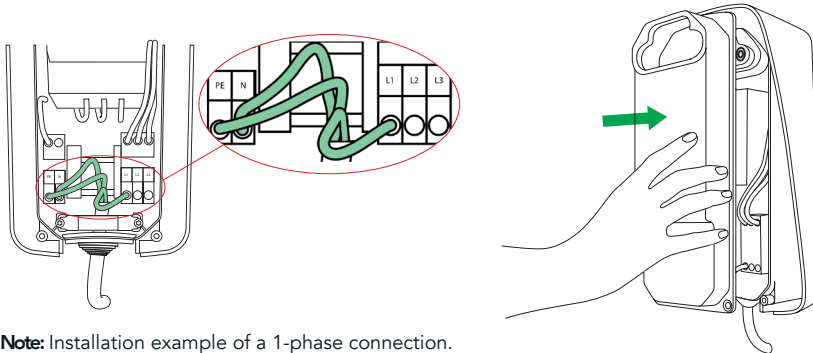


2.11

Connect the wires in their designated terminals. Mount the transparent cover.

Make sure no wiring is protruding from under the transparent cover.

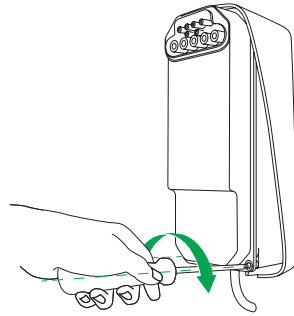
Make sure that the rubber seal gasket around the connectors is in place before assembling the transparent cover.



Note: Installation example of a 1-phase connection.

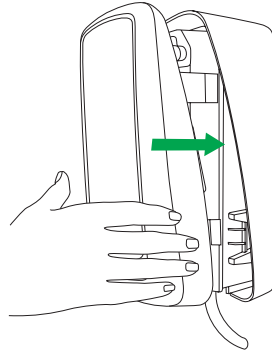
2. install wall dock

Tighten the bolts with the T20 bit. Do not overtighten. Fasten the special bolt in the bottom right corner with a regular flat-head screw driver. This special bolt can be used for sealing the installation with a tamper-evident seal.

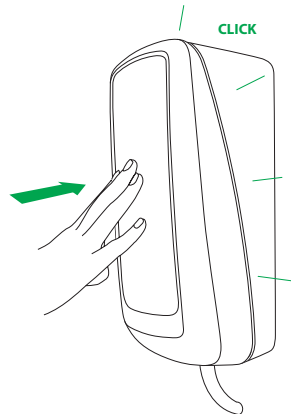


2.12

Align the wall dock cover against the wall dock and press it in a straight line until you hear a clicking sound.



To ensure that the cover is properly fitted, press firmly on all four corners.



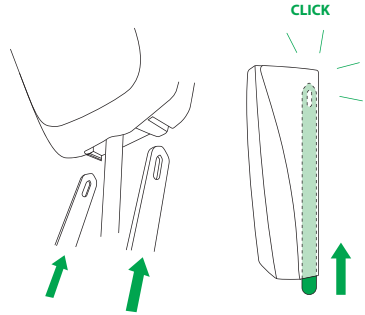
3. remove wall dock cover

⚠ Warning: Risk of electric shock.

Before removing the wall dock cover, make sure that the power line you're using is switched off on your service panel.

Take the keys found in the box.

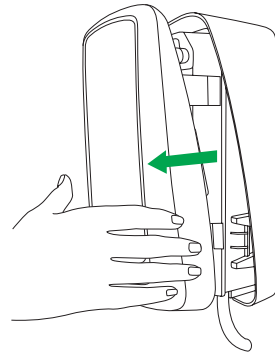
Insert the keys into the slots in the bottom of the wall dock. This releases the snap-fit connection of the wall dock cover to the wall dock. Make sure to push them in until they only stick out approx. 50 mm and cannot be pushed in any further.



Now you can remove the cover from the wall dock. Pull the cover away from the wall dock in a straight line.

Caution: Do not twist or skew the cover, as that might damage the snap fits and/or connectors.

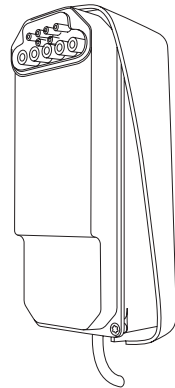
Take out the keys from the wall dock.



Prepare for Elvi installation

Now the wall dock is ready for Elvi installation.

For installations instructions of Elvi, follow the steps from chapter "Install station" in the Elvi Installation manual provided together with the charging station.



4. warranty

4.1 EVBox warrants to Customer on delivery and for a period of three (3) years thereafter that the Products are free from material defects in material and workmanship and conform in all material aspects with the specifications as explicitly listed in the Documentation, except for charging cables, their connectors and software, for which the warranty is limited to three (3) months from delivery. Except as stated in this clause 4.1, EVBox provides no warranties of any kind in respect of the Products.

4.2 Subject to clause 4.3, EVBox shall, at its option, repair or replace defective Products, or refund the price of defective Products if:

- (a) Customer gives notice in writing during the warranty period within a period of fourteen (14) days after the Customer has discovered or should reasonably have discovered that some or all of the Products do not comply with the warranty as set out in clause 4.1;
- (b) Customer returns such Products to EVBox (at the location specified by EVBox) at Customer's cost and following the RMA (return merchandise authorization) instructions from EVBox, if the nature of the Product allows such return; and
- (c) EVBox is given a reasonable opportunity of examining such Products and provided by Customer with all information it may reasonably require to proceed to such examination. With respect to repair, EVBox is entitled to apply problem-avoiding restrictions and/or Workarounds.

4.3 EVBox shall not be liable for the Products' failure to comply with the warranty in clause 4.1 if:

- (a) Customer makes any further use of such Products after giving a notice in accordance with or failed to provide notification within fourteen (14) days as set out in clause 4.2;
- (b) The Error arises because Customer failed to follow EVBox's oral or written instructions as to the storage, installation, commissioning, use or maintenance of the Products or (if there are none) good trade practice (such as but not limited to use of the Products with parts, accessories or software not provided or approved by EVBox);
- (c) The Error arises as a result of EVBox following any customisation or Product specification supplied by Customer;
- (d) Repairs or other interventions on the Products are performed by persons not trained for this purpose, against EVBox's oral or written instructions, or with parts not supplied or approved by EVBox; or
- (e) The Error arises as a result of fair wear and tear, wilful damage or negligence by Customer and/or a third party, or abnormal working conditions (such as but not limited to damages resulting from vandalism, animals, high-pressure cleaners, or Error in connected vehicles).

4.4 In all cases, the following are excluded from the coverage of the warranty:

- (a) Travel costs and labour costs of repair, including time spent on preliminary work or on disassembly and reassembly, if the repair of the Products is to take place at the installation site due to the nature of the Products;
- (b) Cleaning, routine maintenance and preventative maintenance operations of the Products as defined in the Documentation, as well as the supply of products necessary for these operations;
- (c) Restarting operations after the Product has been secured, for example by circuit breakers, ground fault circuit interrupters (GFCIs), fuses or emergency stops; and
- (d) In general, all operations on site, especially if no parts need to be replaced.

4.5 The Agreement shall apply to any repaired or replacement Products supplied by EVBox.

This warranty statement is subject to change.

Please refer to [evbox.com/general-terms-conditions](https://www.evbox.com/general-terms-conditions) for the latest version.

5. declaration of conformity

EVBox B.V.,

NL registration KvK 32165082_000018683428
Fred. Roeskestraat 115, 1076 EE Amsterdam, The Netherlands

declares under its' sole responsibility that the following products:

- Article series E1160-XX50XX: EVBox Charging station, 1-phase 16 A with charging cable
- Article series E1320-XX50XX: EVBox Charging station, 1-phase 32 A with charging cable
- Article series E3160-XX50XX: EVBox Charging station, 3-phase 16 A with charging cable
- Article series E3320-XX50XX: EVBox Charging station, 3-phase 32 A with charging cable

provided that they are installed, maintained and used in the applications for which they were designed, in accordance with professional practices, relevant installation standards and manufacturer's instructions for use and installation, are CE certified and comply with the essential requirements of EMC Directive 2014/30/EU and Low Voltage Directive 2014/35/EU in accordance with the following standards:

- EN/IEC 61000-6-2 (2005)
- EN/IEC 61000-6-3 (2007) + A1 (2011)
- EN/IEC 61000-3-2 (2014)
- EN/IEC 61000-3-3 (2013)
- EN/IEC 60529-1 (1989) +A1 (1999) + A2 (2013)
- EN/IEC 60950-1 (2005) + A1 (2009) + A2 (2013)
- EN/IEC 60950-22 (2005)
- EN/IEC 61851-1 (2010)
- EN/IEC 61851-22 (2001)
- EN/IEC 62196-1 (2014)
- EN/IEC 62196-2 (2017)

Amsterdam, December 28th 2018



Arjan van Rooijen

Chief Technical Officer

The present document is drawn up by way of information only and does not constitute an offer binding upon EVBox. EVBox has compiled the contents of this document to the best of its knowledge. No express or implied warranty is given for the completeness, accuracy, reliability or fitness for particular purpose of its content and the products and services presented therein. Specifications and performance data contain average values within existing specification tolerances and are subject to change without prior notice. Prior to ordering, always contact EVBox for the latest information and specification. EVBox explicitly rejects any liability for any direct or indirect damage, in the broadest sense, arising from or related to the use and/or interpretation of this document. EVBIM_032019 © EVBox B.V.

EVBox strives to manufacture products of the highest quality. EVBox products are fully CE certified and compliant with the essential requirements of EMC Directive 2014/30/EU and Low Voltage Directive 2014/35/EU. More details can be found at evbox.com or in this installation manual. EVBox products are sold with a limited warranty described at evbox.com/general-terms-conditions.

© 2019 EVBox B.V. All rights reserved. Elvi®, EVBox® and the EVBox logo are trademarks or registered trademarks of EVBox B.V. in the EU and in other countries.

EVBox B.V.
Fred. Roeskestraat 115,
1076 EE Amsterdam
support@evbox.com
evbox.com



RoHS
Compliant





Part number: 999483

